


MICHIGAN STATE UNIVERSITY

February 14, 2020

MEMORANDUM

To: Committee on Budget and Finance

From: Samuel L. Stanley, Jr., M.D. 
President

Subject: **Project Approval - Authorization to Proceed**
Munn Ice Arena - Expansion
(budget adjustment)

RECOMMENDATION

The Trustee Committee on Budget and Finance recommends that the Board of Trustees authorize the Administration to increase the budget for the Munn Ice Arena expansion.

RESOLUTION

BE IT RESOLVED, that the Board of Trustees of Michigan State University hereby authorizes the Administration to increase the budget for the project entitled "Munn Ice Arena - Expansion" from \$18,800,000 to \$23,235,000.

BACKGROUND

The Board authorized this project to proceed in June 2019 with a budget of \$18,800,000, which included a contingency of \$1,000,000. The project comprises a 35,000 square foot addition, which creates a new public "front door" to Munn Ice Arena. The project provides gathering spaces outside and around the building, team meeting spaces, and new training facilities. The project features memorabilia displays to embrace and celebrate MSU Hockey history and success, expands and relocates hockey operations and coaching offices from the basement to the renovated first floor, and improves the quality of the fitness and weight facilities in alignment with other recently completed collegiate hockey venues. The project also addresses needed infrastructure and energy improvements.

Budget Adjustment:

Bidding for the project began in summer 2019, with construction commencing in August. The project has encountered several items contributing to the increased cost. Bids have been consistently over estimate and it became clear that the scale of the project, challenges of working through an active hockey season, and conditions inherent in a renovation project impacted pricing more than anticipated. Further, the concealed existing conditions were worse than



Office of the President

Hannah Administration
Building
426 Auditorium Road, Room 450
East Lansing, MI 48824

517-355-6560
Fax: 517-355-4670
president.msu.edu

anticipated. Soils were not able to support the addition without a different structural solution, which consumed a significant portion of the contingency. After review, the Administration proposes to increase the existing project budget by \$3,400,000, with an additional contingency of \$210,000. This project will also include \$825,000 in capital renewal.

The Construction Manager is Barton Malow Company. The Architect/Engineer is Rossetti Associates, Inc.

Communication Feedback:

Members of the campus community had opportunities to provide feedback during the planning phase. Any concerns they expressed have been addressed in the project design.

The Campus Infrastructure Planning Work Group supports the recommendation to proceed with the project.

As construction proceeds, the schedule will be shared with the campus community.

Project Cost and Timetable:

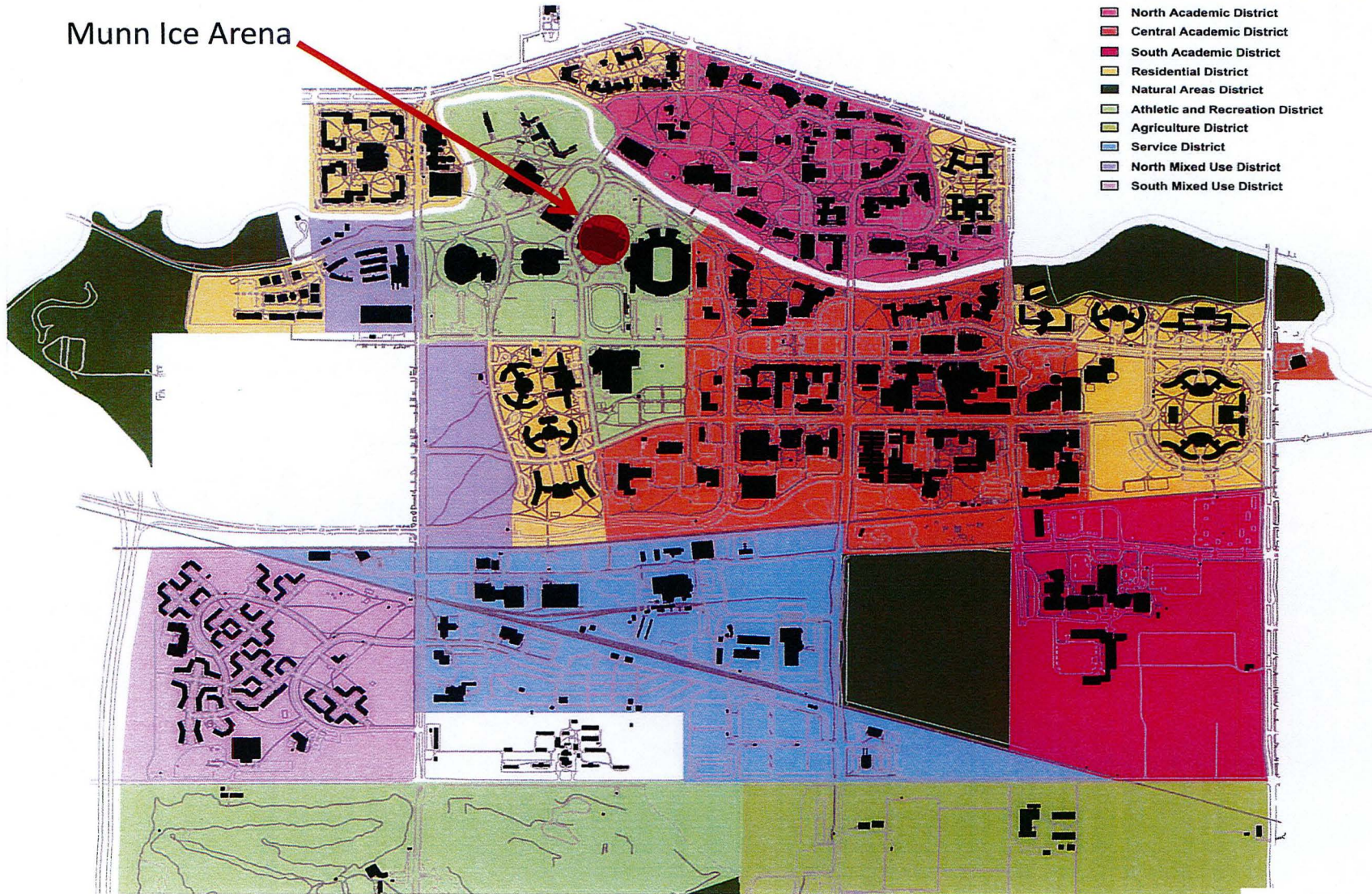
The revised budget for this Construction Management project is \$23,235,000 with a revised contingency of \$1,210,000. The project will be funded by gifts to Intercollegiate Athletics, capital renewal, Intercollegiate Athletics, and/or debt financing with debt repayment from the above sources.

Construction is underway, with substantial completion expected in December 2020.

cc: Board of Trustees, T. Sullivan, K. Wilbur, N. Barr, M. Zeig,
B. Quinn, D. Bollman, V. Gore, M. Haas, J. Gaboury, B. Kranz, M. McCabe,
J. Mumma, J. Rayis, L. Adams, K. Oosterhoff, C. Leese, L. Senecal,
A. Haller, B. Beekman

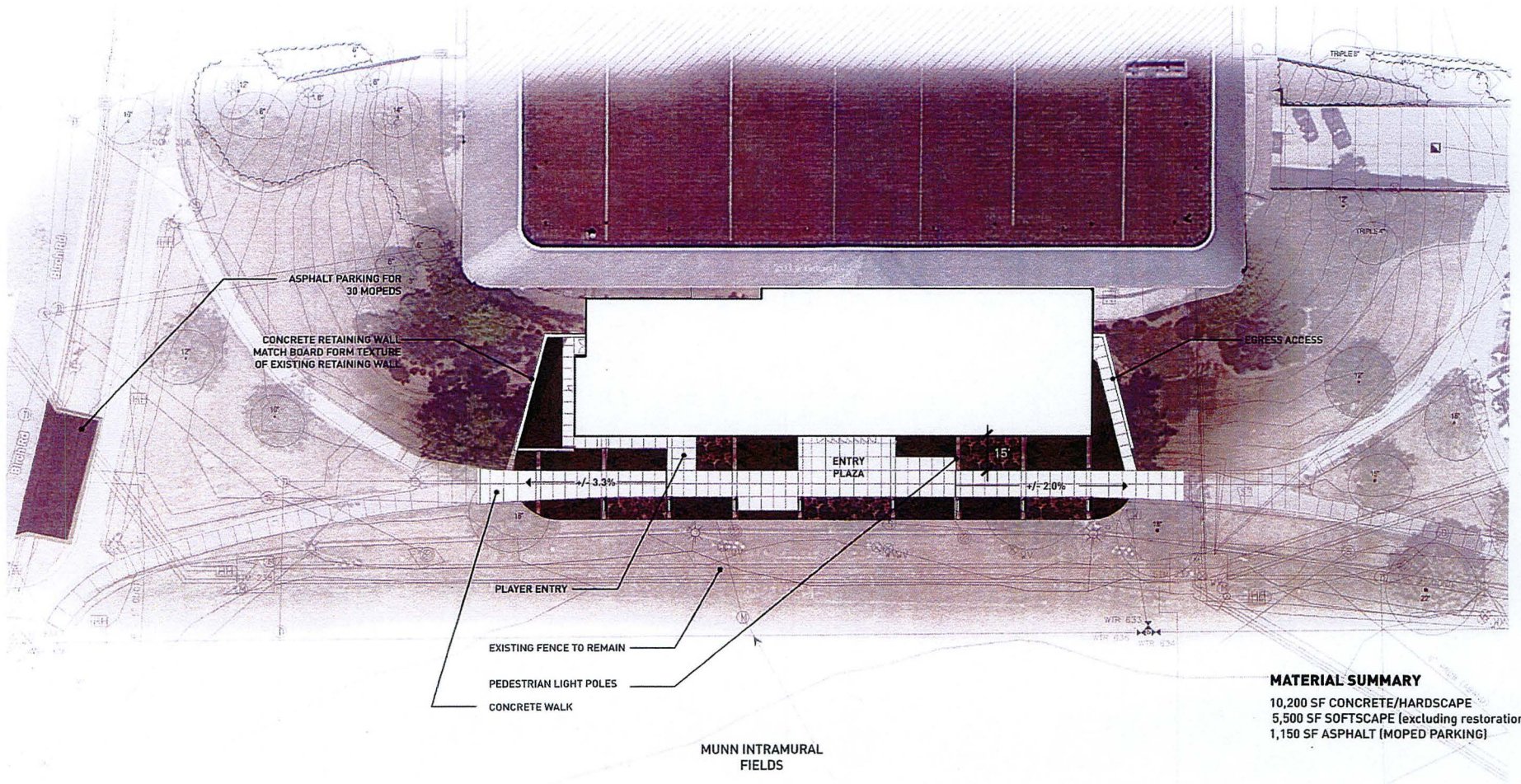
Project Approval – Authorization to Proceed *(budget adjustment)*
Munn Ice Arena – Expansion

Munn Ice Arena



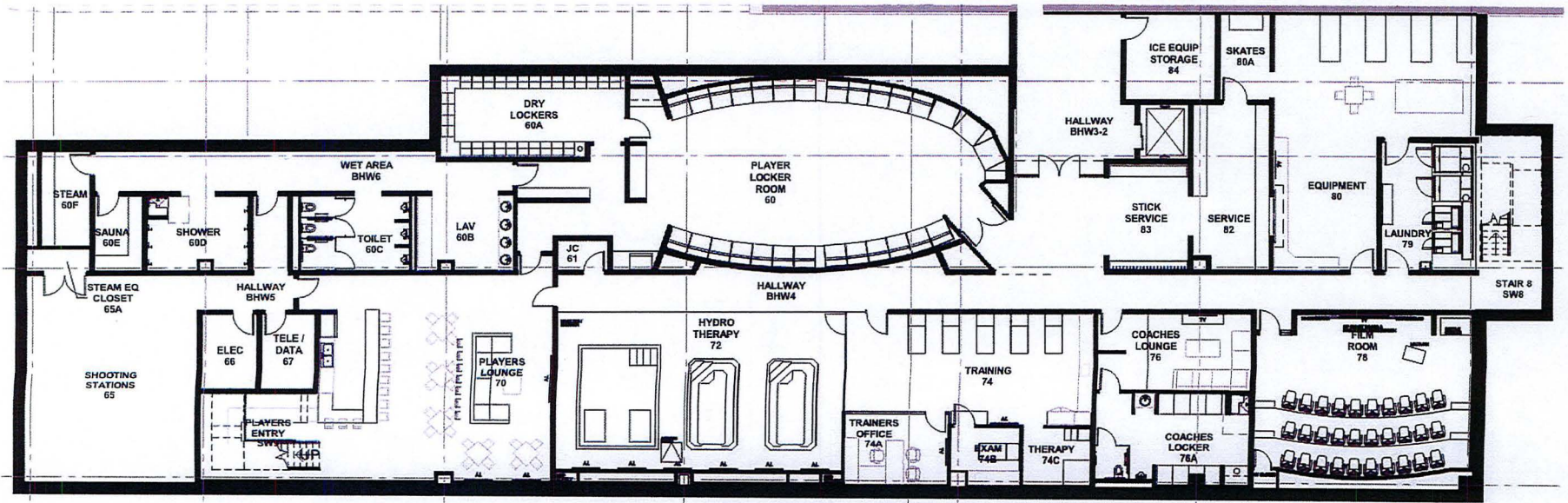
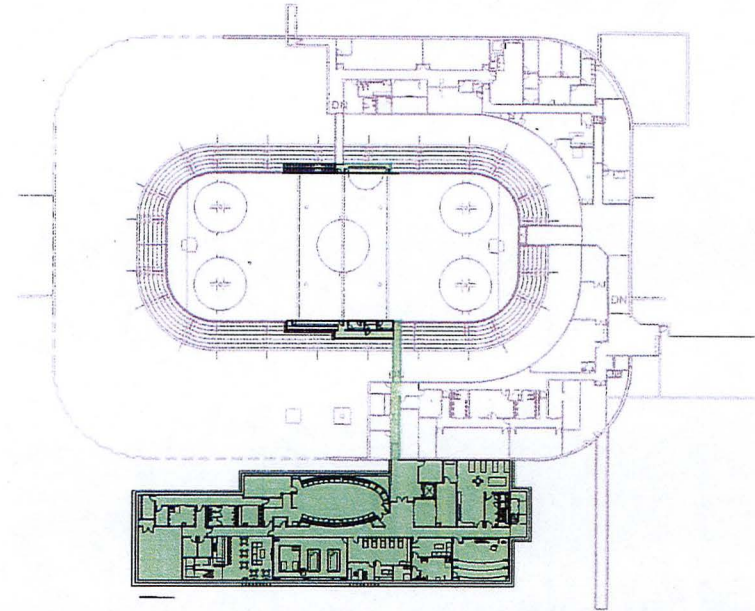
Project Approval – Authorization to Proceed (budget adjustment)
Munn Ice Arena – Expansion

Proposed Site Plan



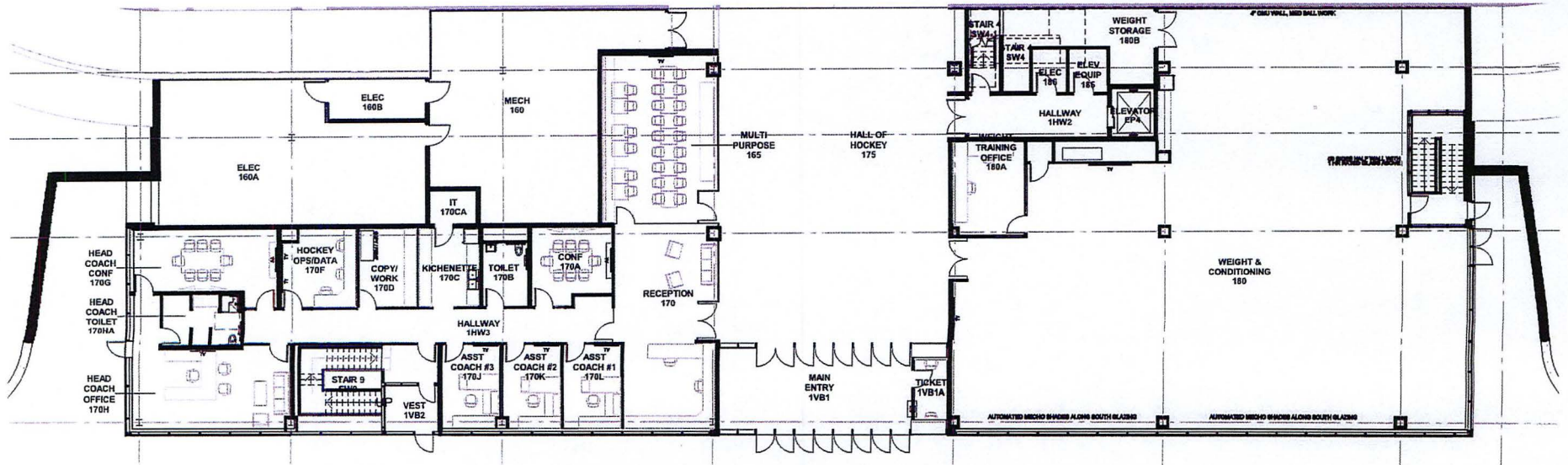
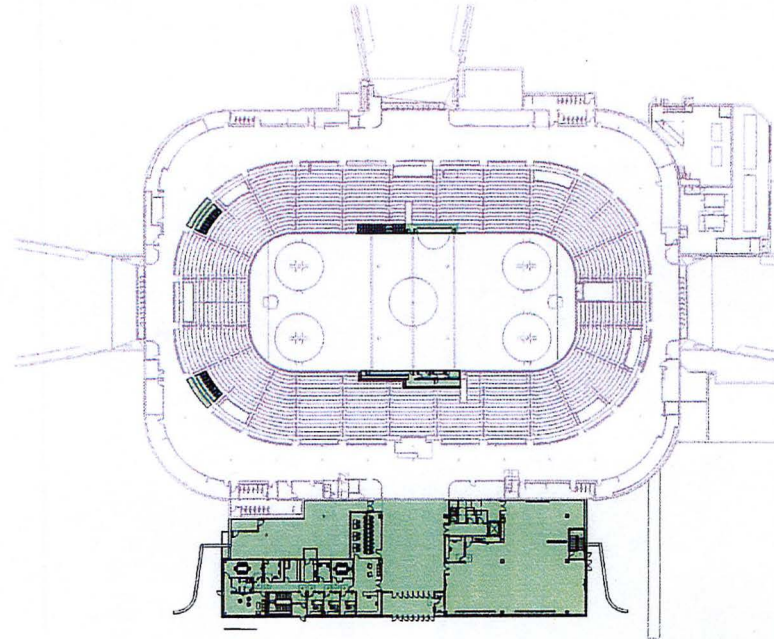
Project Approval – Authorization to Proceed (budget adjustment)
Munn Ice Arena – Expansion

Lower Level Floor Plan

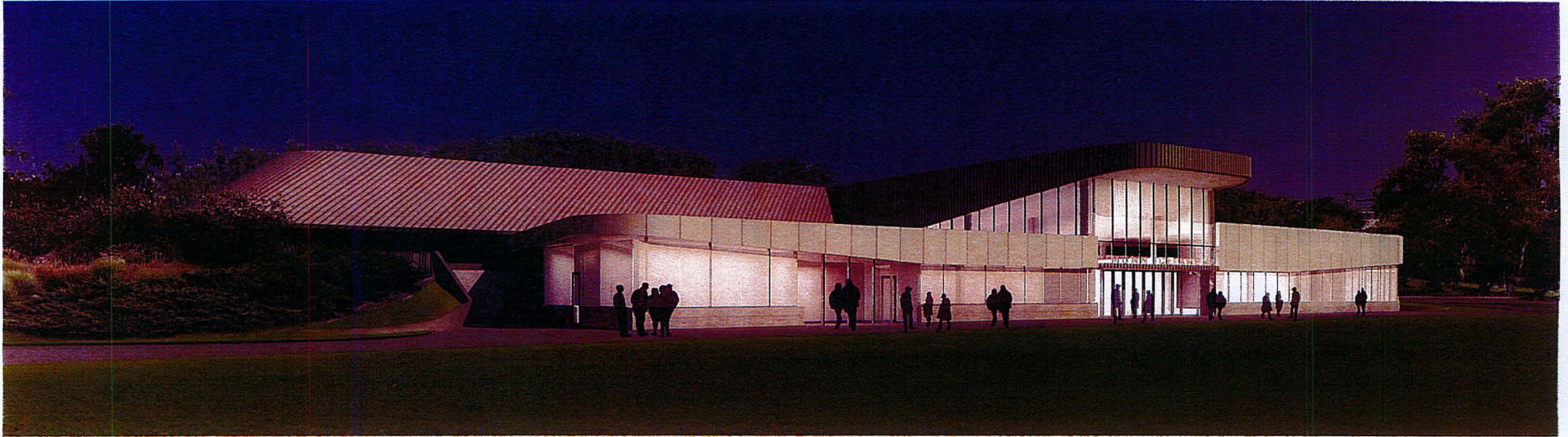


Project Approval – Authorization to Proceed (budget adjustment)
Munn Ice Arena – Expansion

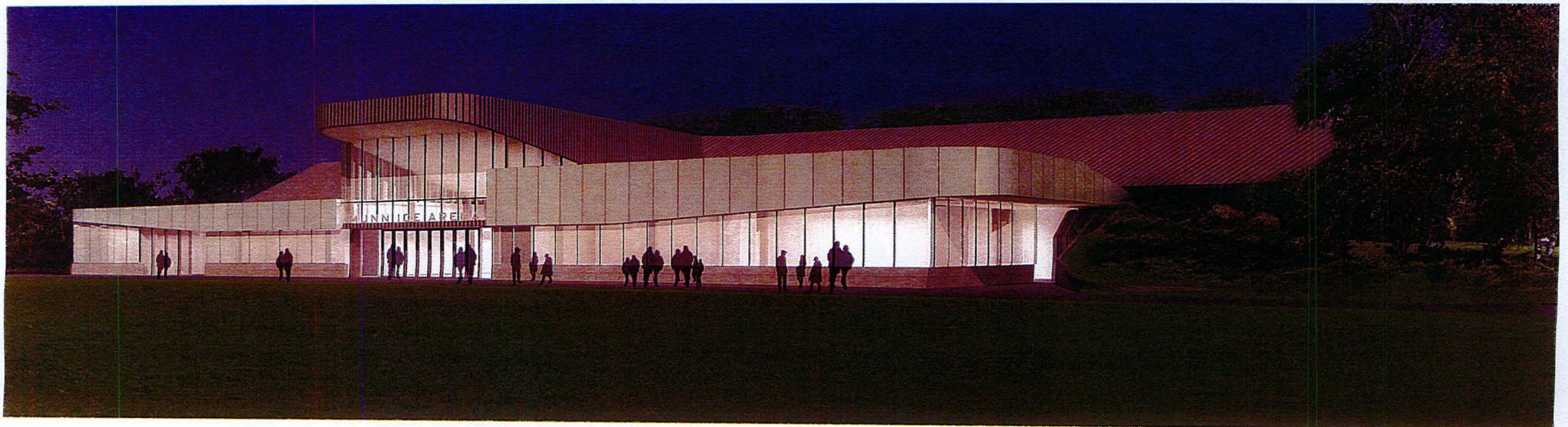
Ground Level Floor Plan



Proposed Southwest Building Elevation



Proposed Southeast Building Elevation



MICHIGAN STATE
UNIVERSITY

August 20, 2018



MEMORANDUM

To: Committee on Budget and Finance

From: Daniel J. Bollman *Daniel J. Bollman*
Associate Vice President for Strategic Infrastructure Planning
and Facilities

Subject: **Authorization to Plan**
Munn Ice Arena - Expansion

RECOMMENDATION

The Trustee Committee on Budget and Finance recommends that the Board of Trustees authorize the Administration to plan for an addition to Munn Ice Arena.

RESOLUTION

BE IT RESOLVED, that the Board of Trustees of Michigan State University hereby authorizes the Administration to plan for the project entitled "Munn Ice Arena - Expansion."

BACKGROUND

Program Need:

Munn Ice Arena opened in 1974. In addition to being the home of MSU Hockey, it also hosts classes, club sports, sports camps, and public skating opportunities. The building has fallen behind its peers, particularly for team operations. It is lacking in team meeting space, operational areas, and energy efficiency. Further, the building does not have an appropriate presence for a facility that hosts 6,800 guests.

General Description of the Project:

As planning begins, the project is anticipated to include a new public front door to Munn Ice Arena to include memorabilia; expanding and relocating the hockey operations offices and coaching offices from the basement to the renovated first floor; improving the quality of the varsity lockers, fitness, weight and other varsity facilities in alignment with other recently completed collegiate hockey facilities; add concessions and improve the public skating



Office of the
Vice President
for Strategic
Infrastructure
Planning and
Facilities

Daniel J. Bollman
Associate Vice President

Infrastructure Planning
and Facilities Building
Michigan State University
1147 Chestnut Road
Room 101
East Lansing, MI 48824

517-355-3366
Fax: 517-353-6358
ipf.msu.edu

experience by providing an appropriate lobby, skate changing, skate rental, and pro shop; and redesign all entries to incorporate vestibules, providing airlocks and the ability to keep the conditioned air inside at peak periods.

Munn Ice Arena is between Birch Road and Chestnut Road in the athletic and recreation district. The project will be consistent with the Campus Land Use Master Plan.

Communication Plan:

Input will be solicited from the campus community during the planning phase.

Preliminary Project Cost Information:

Based on cost experience for similar projects and current pricing information, the preliminary project cost estimate is \$14,000,000 - \$16,000,000. This estimate may change as the project and its scope are refined during the planning process.

The source of funds for the project is expected to be gifts to intercollegiate Athletics or debt financing with debt repayment from gifts to intercollegiate Athletics.

cc: Board of Trustees, J. Engler, J. Youatt, S. Udpa, R. Young, N. Barr, V. Gore, M. Haas, J. Gaboury, B. Kranz, M. McCabe, J. Mumma, J. Rayis, L. Adams, K. Watson, B. Beekman

CP18134

**MICHIGAN STATE
UNIVERSITY**

June 21, 2019



MEMORANDUM

To: Committee on Budget and Finance
From: Daniel J. Bollman *Daniel J. Bollman*
Vice President for Strategic Infrastructure Planning and Facilities
Subject: **Project Approval - Authorization to Proceed**
Munn Ice Arena - Expansion

RECOMMENDATION

The Trustee Committee on Budget and Finance recommends that the Board of Trustees authorize the Administration to proceed with an addition to Munn Ice Arena.

RESOLUTION

BE IT RESOLVED, that the Board of Trustees of Michigan State University hereby authorizes the Administration to proceed with the project entitled "Munn Ice Arena - Expansion," with a project budget of \$18,800,000.

BACKGROUND

Program Need:

Munn Ice Arena opened in 1974. In addition to being the home of MSU Hockey, it also hosts classes, club sports, sports camps, and public skating opportunities. The building has fallen behind its peers, particularly for team operations. It is lacking in team meeting space, operational areas, and energy efficiency. Further, the building does not have an appropriate presence for a facility that hosts 6,800 guests.

Description of Project:

Munn Ice Arena is between Birch Road and Chestnut Road in the athletic and recreation district. This project, which includes a 35,000 square foot addition, will create a new public "front door" to Munn Ice Arena. The project provides gathering spaces outside and around the building, team meeting spaces, new training facilities, and improvements to community skate operations. The project will feature memorabilia displays to embrace and celebrate MSU Hockey history and success, expand and relocate hockey operations and coaching offices from the basement to the renovated first



Office of the
Vice President
for Strategic
Infrastructure
Planning and
Facilities

Daniel J. Bollman
Vice President

Infrastructure Planning
and Facilities Building
Michigan State University
1147 Chestnut Road
Room 101
East Lansing, MI 48824

517-355-3386
Fax: 517-353-8358
ipf.msu.edu

floor, and improve the quality of the varsity lockers, fitness and weight facilities in alignment with other recently completed collegiate hockey venues. The project will also address needed infrastructure and energy improvements.

The Architect is Rossetti Associates, Inc. The Construction Manager is Barton Malow Company.

Communication Feedback:

Members of the campus community had opportunities to provide feedback during the planning phase. Any concerns they expressed have been addressed in the project design.

The Campus Infrastructure Planning Work Group supports the recommendation to proceed with the project.

As construction proceeds, the schedule will be shared with the campus community.

Project Cost and Timetable:

The budget for this Construction Manager project is \$18,800,000 including a \$1,000,000 contingency. The project will be funded by non-general funds and gifts to Intercollegiate Athletics and/or debt financing with debt repayment from the above sources.

Construction is expected to begin in June 2019, with substantial completion in December 2020.

cc: Board of Trustees, S. Udpa, J. Youatt, N. Barr, K. Wilbur, M. Zeig,
B. Quinn, V. Gore, M. Haas, J. Gaboury, B. Kranz, M. McCabe,
J. Mumma, J. Rayis, L. Adams, K. Oosterhoff, B. Beekman, A. Haller,
M. Heil, C. Carter, L. Senecal